


QuSpot LTE MIMO 4x4

INTEGRATED MULTI-BAND LTE OMNI ANTENNA + PLACE TO INSTALL ROUTERBOARD WITH MODEM

QuSpot 4x4 omnidirectional LTE outdoor antenna for LTE modems. It's primary designed for LTE/3G/2G 4x4 modems. The antenna can be used for the most popular LTE bands (e.g. 3,7,20), frequencies 694-2700 MHz. The mounting bracket allows the antenna to be installed on the pole or on the wall. It features a special place inside to mount your own electronics. The antenna is equipped with MHF4 connectors.

4G
LTE
694-2700MHz
**OMNI
DIRECTIONAL**
IP 67
-40° TO +80°

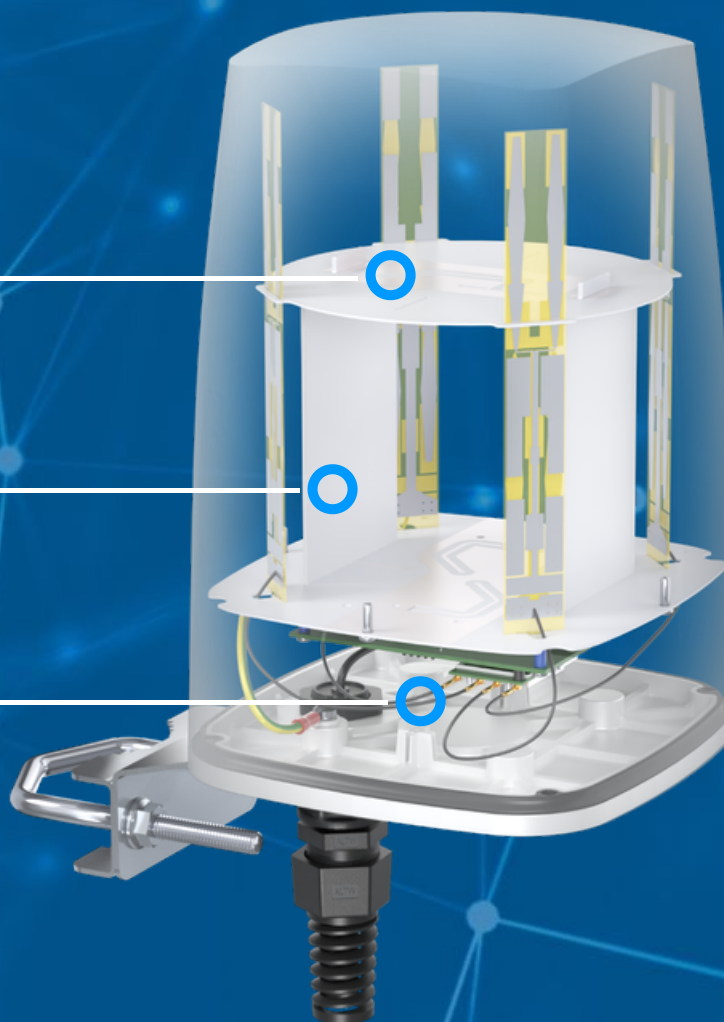
OUTDOOR ANTENNA WORKS IN ANY
WEATHER CONDITIONS, IP67



GALVANIZED STEEL, WALL OR POLE
MOUNTING BRACKET



MADE IN EUROPE



LTE ANTENNA SPECIFICATION

FREQUENCY	694 - 960 MHz 1.7 - 2.2 GHz 2.5 - 2.7 GHz
GAIN	694 - 960 MHz : 2 dBi 1.7 - 2.2 GHz : 2 dBi 2.5 - 2.7 GHz : 3 dBi
VSWR	<1.50, max <2.50
BEAMWIDTH	360°/25° ±5°
POLARIZATION	Vertical
IMPEDANCE	50 Ω

MECHANICAL SPECIFICATION

MATERIALS	ABS, aluminum, PTFE
CONNECTOR TYPE	MHF4
INGRESS PROTECTION	IP67
DIMENSIONS	160 x 160 x 240 mm 6.3 x 6.3 x 9.45 inch
WEIGHT	1.5 kg 3.31 lbs
OPERATING TEMPERATURE	From -40°C to 80°C From -40°F to 176°F
MAST DIAMETER	40-60 mm 1.57-2.36 inch

FREQUENCY BANDS

LTE / 4G GSM

	5	8	12	13	14	17	18	
617	19	20	26	27	28	29	44	960
MHz	67	68	85	103	n81	n82	n83	MHz
	n89	n100						

LTE / 4G UMTS

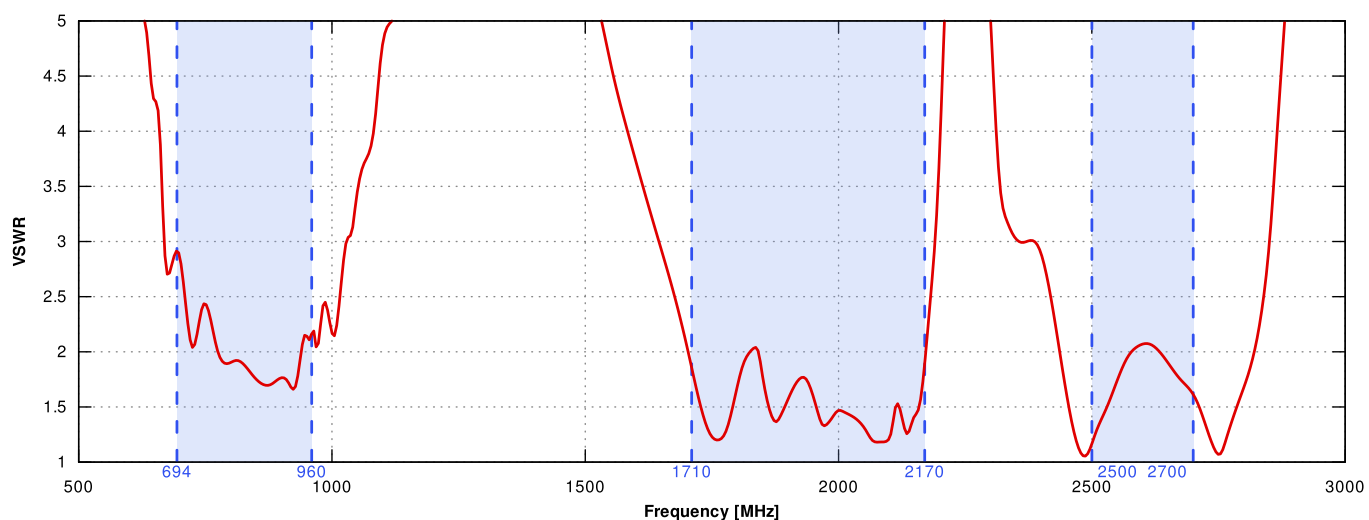
	1	2	3	4	9	10	25	
1710	33	34	35	36	37	39	n80	2170
MHz	n84	n86	n95	n98	n101			MHz

LTE / 4G

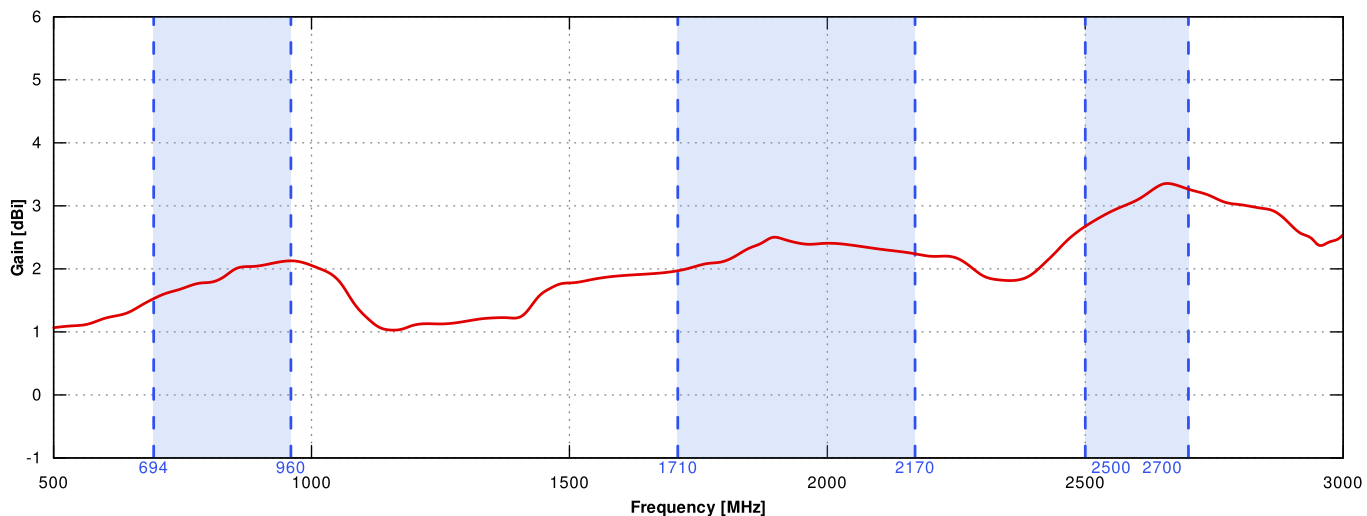
2400	7	38	69	2700
MHz				MHz

PLOTS

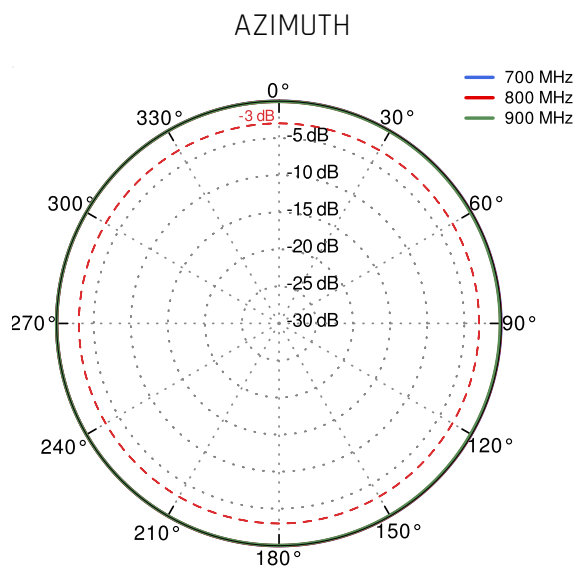
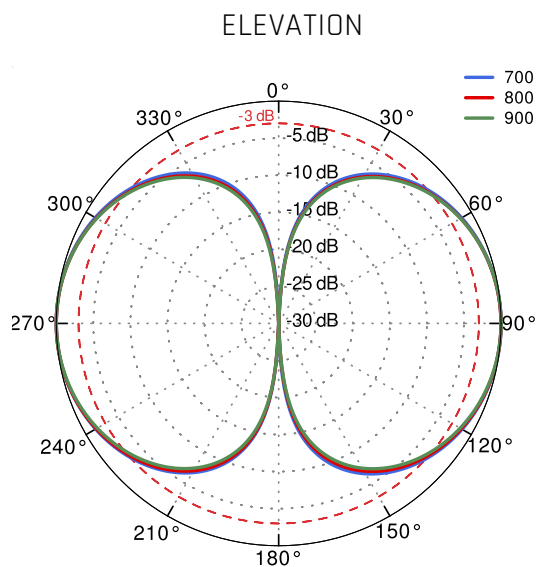
VSWR 



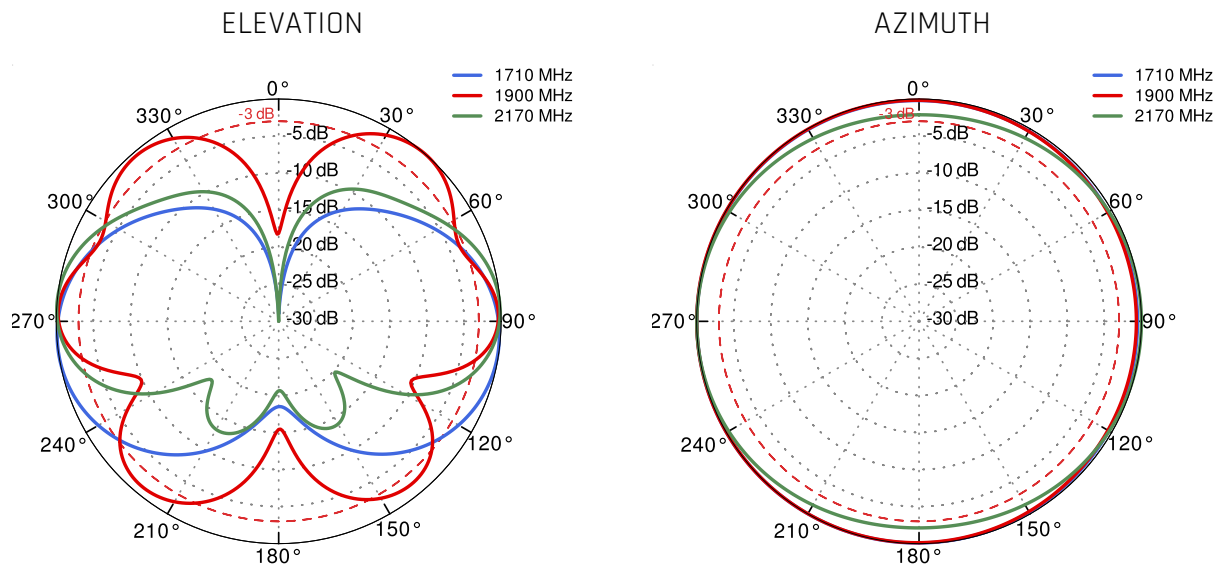
Gain



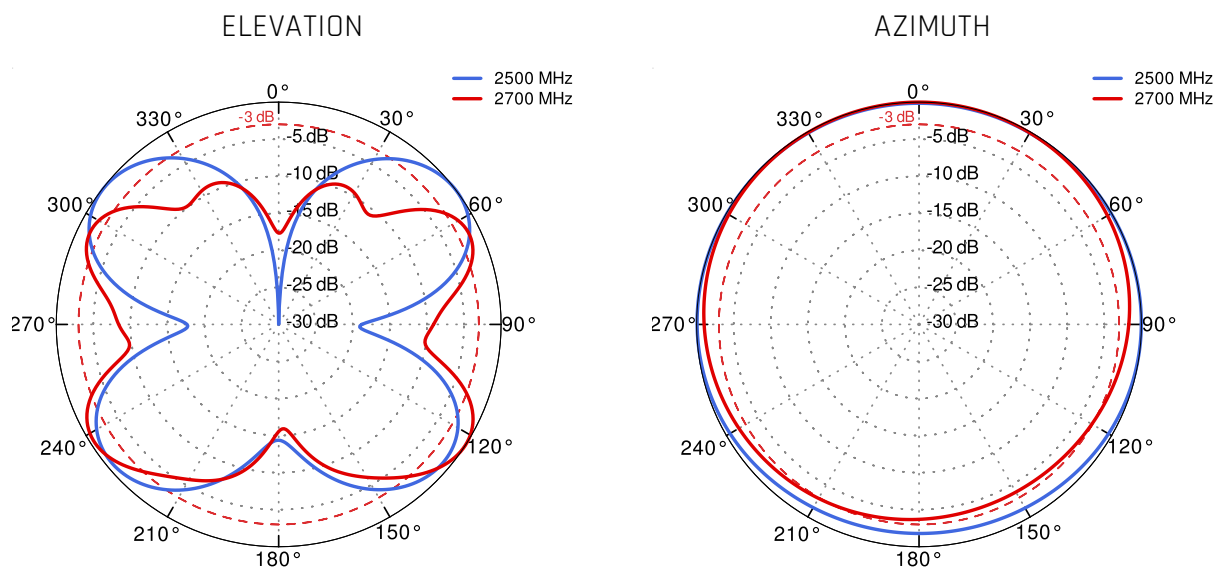
From 700MHz to 900MHz



From 1.71GHz to 2.17GHz



From 2.5GHz to 2.7GHz



DIMENSIONS

