

QuMax Omni for Robustel R5020 Lite

**INTEGRATED MULTI-BAND 5G OMNI ANTENNA + WIFI OMNI ANTENNA + BLUETOOTH ANTENNA + GPS ANTENNA +
PLACE TO INSTALL ROBUSTEL R5020 Lite (ALL-IN-ONE)**

QuMax Omni all-in-one antenna for Robustel R5020 Lite router is a perfect outdoor device for mobile and fixed installations like industrial, public, CCTV, hotspots, yachts, boats, campers, RV etc. It has embedded omni 4*5G, 2*Wi-Fi and GPS antenna. If you use R5020 Lite with QuMax Omni antenna, you get an integrated complete solution with embedded router and multi band antennas in one enclosure.

The set contains a PoE splitter, allowing to provide both data and power via one Ethernet cable and keep Gigabit transfer speeds.

Wi-Fi 6E support!

5G**Wi Fi 6E****GPS**
694-6000MHz
7 dBi
**OMNI
DIRECTIONAL**
IP 67
-40° TO +80°

OUTDOOR ANTENNA WORKS IN ANY
WEATHER CONDITIONS, IP67



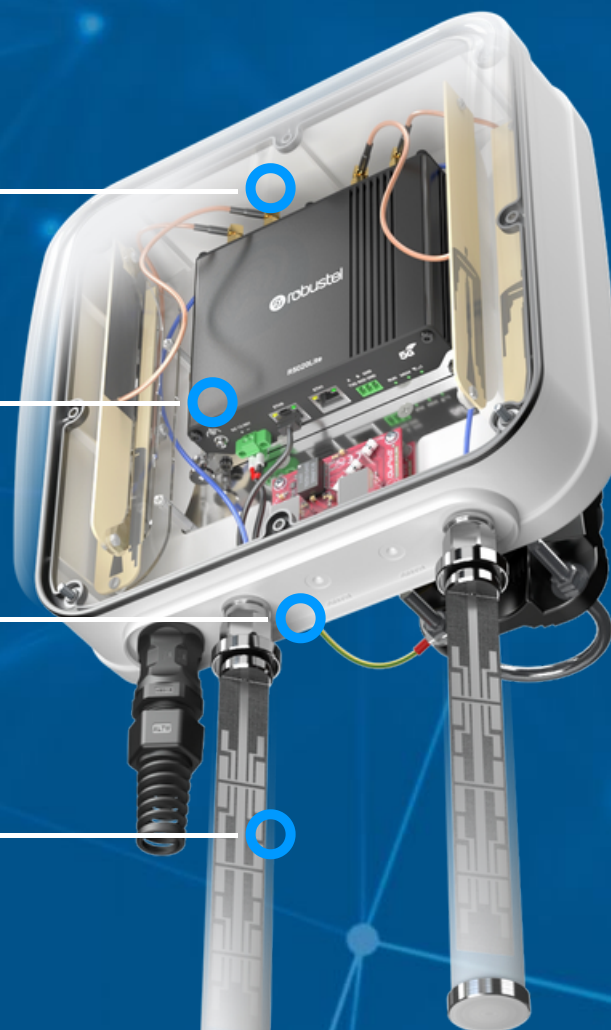
ANTENNA PERFECTLY MATCHED WITH
THE ROBUSTEL R5020 LITE



ALL ANTENNAS AND ROBUSTEL
ROUTER INTEGRATED IN ONE
ENCLOSURE



MADE IN **EUROPE**



5G / LTE SPECIFICATION

FREQUENCY	617 - 960 MHz 1.7 - 2.7 GHz 3.3 - 4.7 GHz 5.2 - 6.0 GHz
GAIN	617 - 960 MHz : 3 dBi 1.7 - 2.7 GHz : 4 dBi 3.3 - 4.7 GHz : 4.5 dBi 5.2 - 6.0 : 2.5dBi
SUPPORTED LTE BANDS	1, 2, 3, 4, 5, 7, 8, 9, 10, 12, 13, 14, 17, 18, 19, 20, 22, 25, 26, 27, 28, 29, 30, 33, 34, 35, 36, 37, 38, 39, 40, 41, 42, 43, 44, 47, 48, 49, 52, 53, 65, 66, 67, 68, 69, 71, 85, 103, 106
SUPPORTED 5G BANDS	n1, n2, n3, n5, n7, n8, n12, n13, n14, n18, n20, n25, n26, n28, n29, n30, n34, n38, n39, n40, n41, n47, n48, n53, n65, n66, n67, n71, n77, n78, n80, n81, n82, n83, n84, n85, n86, n89, n90, n95, n97, n98, n100, n101, n256
VSWR	<1.80, max <2.00
BEAMWIDTH	360°/35° +/- 5°
POLARIZATION	Vertical
IMPEDANCE	50 Ω

WI-FI SPECIFICATION

FREQUENCY	2.4 - 2.5 GHz 5.0 - 7.2 GHz
GAIN	2.4 - 2.5 GHz: 6 dBi 5.0 - 6.0 GHz: 7.5 dBi
VSWR	<1.70, max <2.00
BEAMWIDTH	360°/25° +/- 5°
POLARIZATION	Vertical
IMPEDANCE	50 Ω

MECHANICAL SPECIFICATION

MATERIAL	BS, aluminum, PTFE, Fiberglass
INGRESS PROTECTION	IP67
CONNECTOR TYPE	RJ45
DIMENSIONS	272 x 276 x 96 mm 10.71 x 10.87 x 3.78 inch
WEIGHT	1.8 kg 3.97 lbs
OPERATING TEMPERATURE	From -40°C to 75°C From -40°F to 167°F

MOUNTING KIT

DIMENSIONS

9.9 x 10.5 x 14.8 cm
3.9 x 4.13 x 5.83 inch

REGULATION RANGE

+/- 30°

MAST DIAMETER RANGE

25 - 60mm
0.98-2.36 inch

MATERIAL

Polyamide with fiberglass + galvanized steel U-Bolts

WEIGHT

0.87kg

MOUNTING PLACE

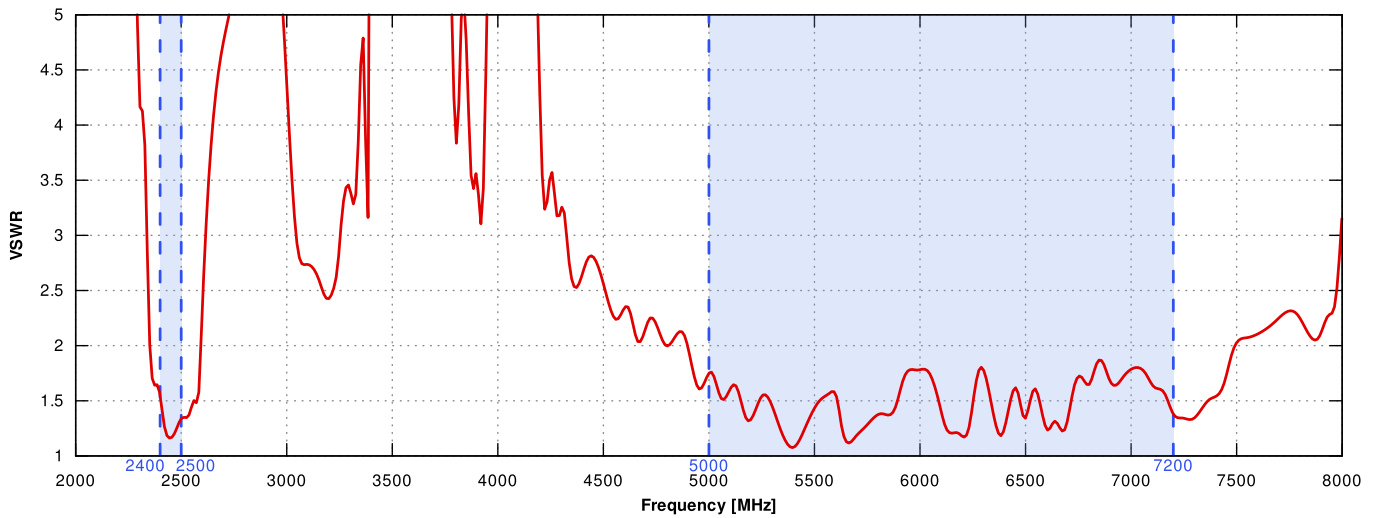
Wall or mast or ceiling

PLOTS

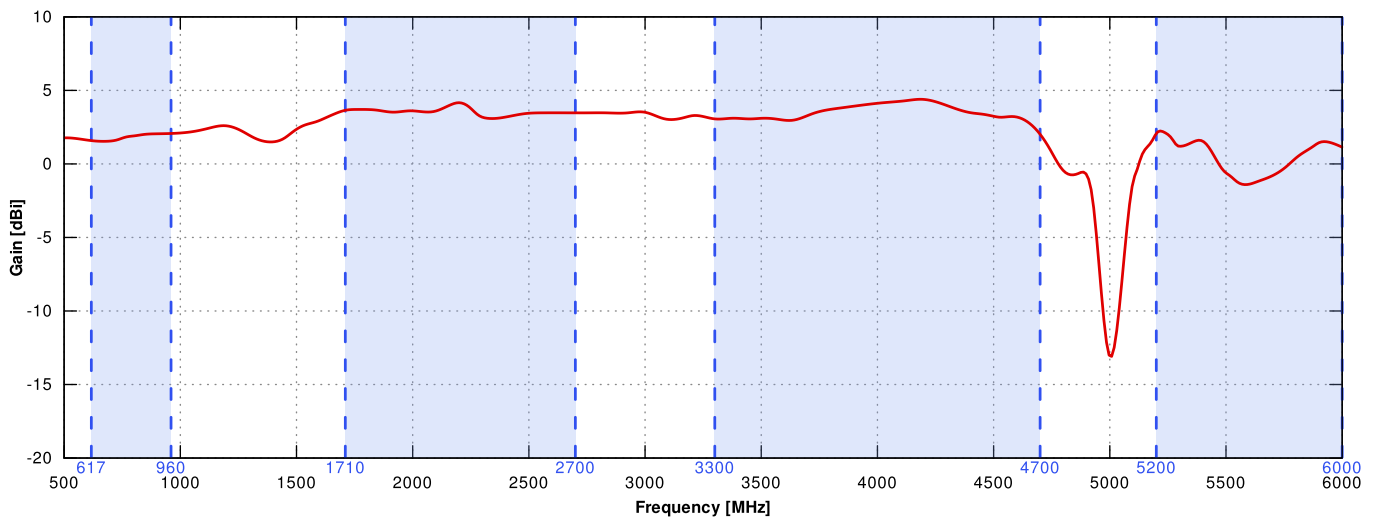
5G/LTE VSWR



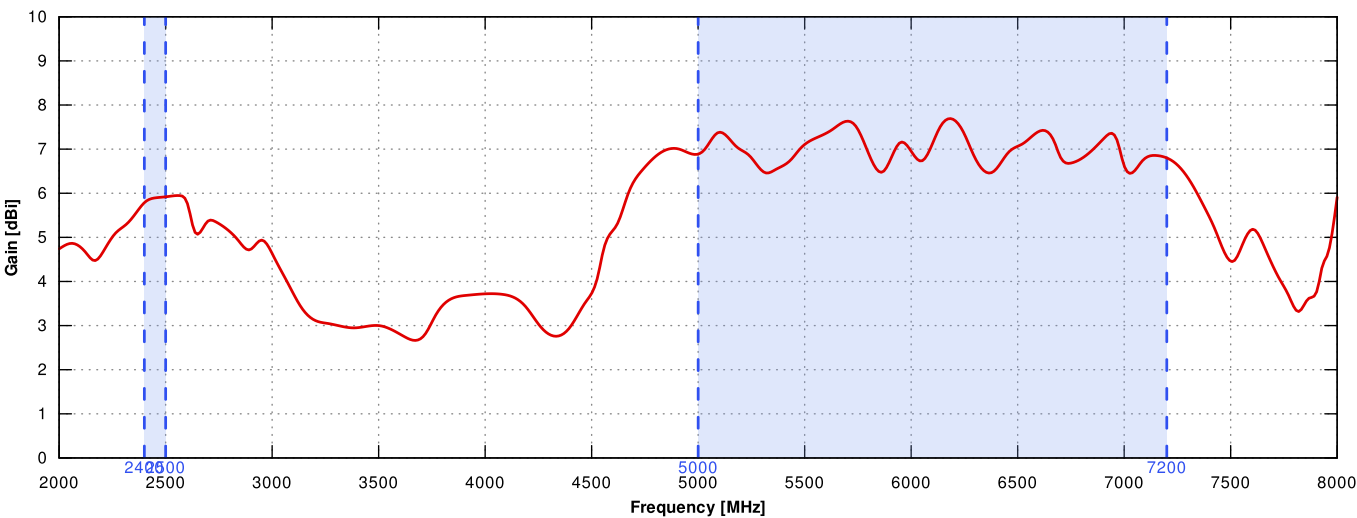
WI-FI VSWR



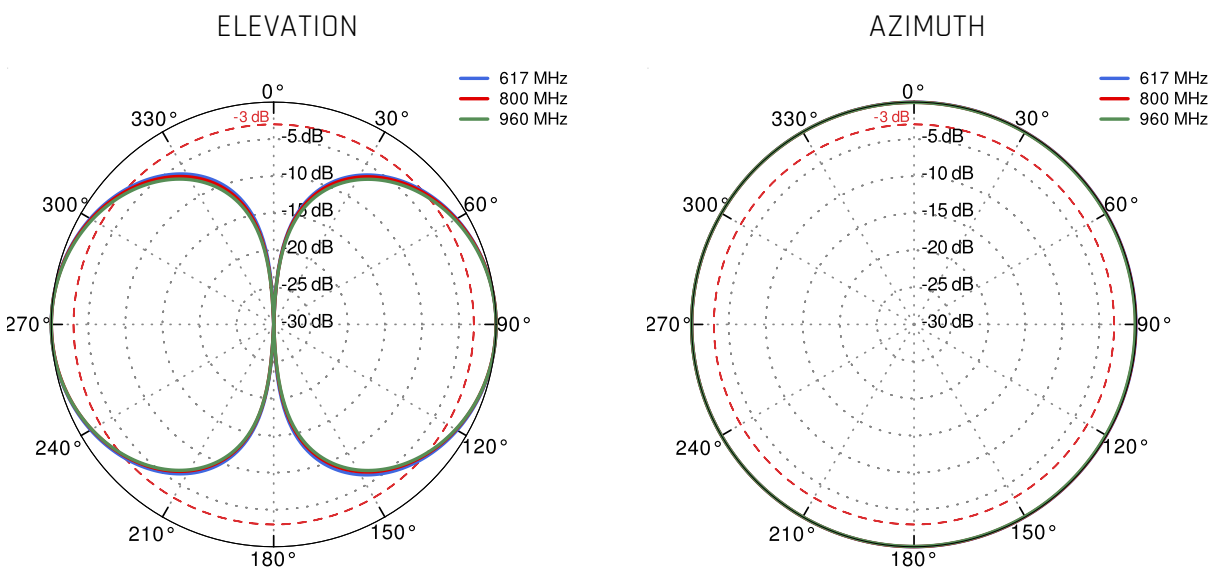
5G/LTE Gain



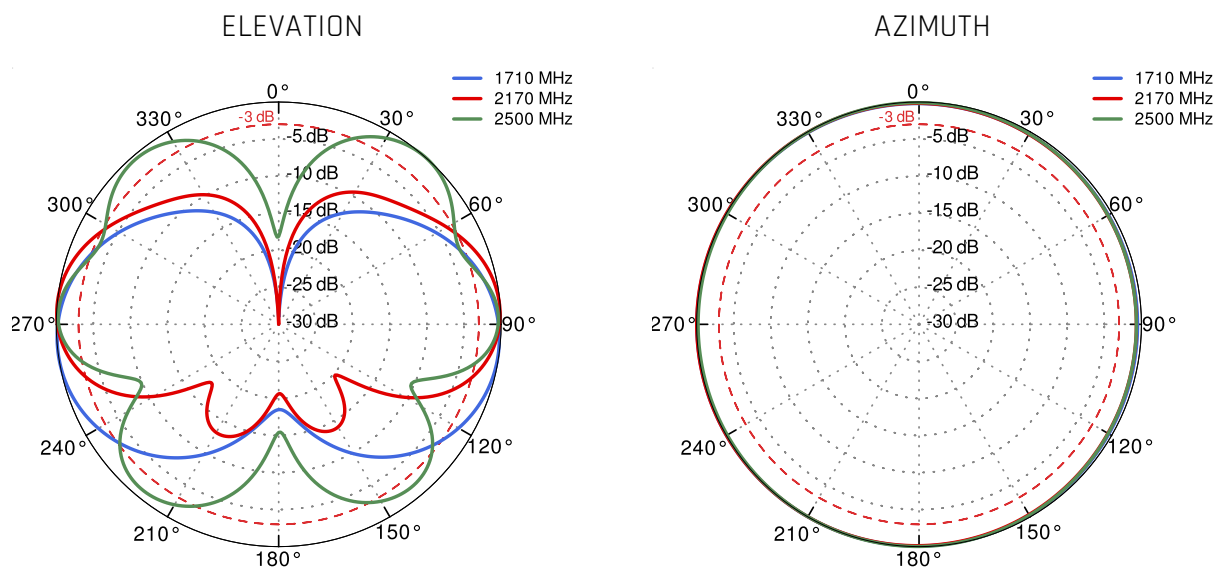
Wi-Fi Gain



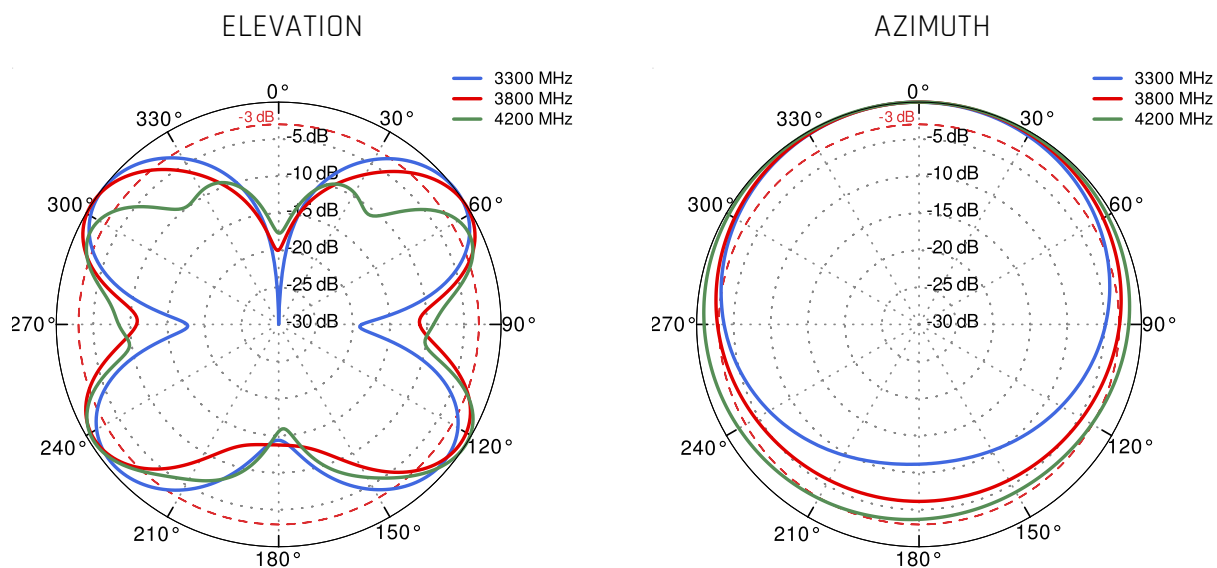
5G/LTE from 617MHz to 950MHz



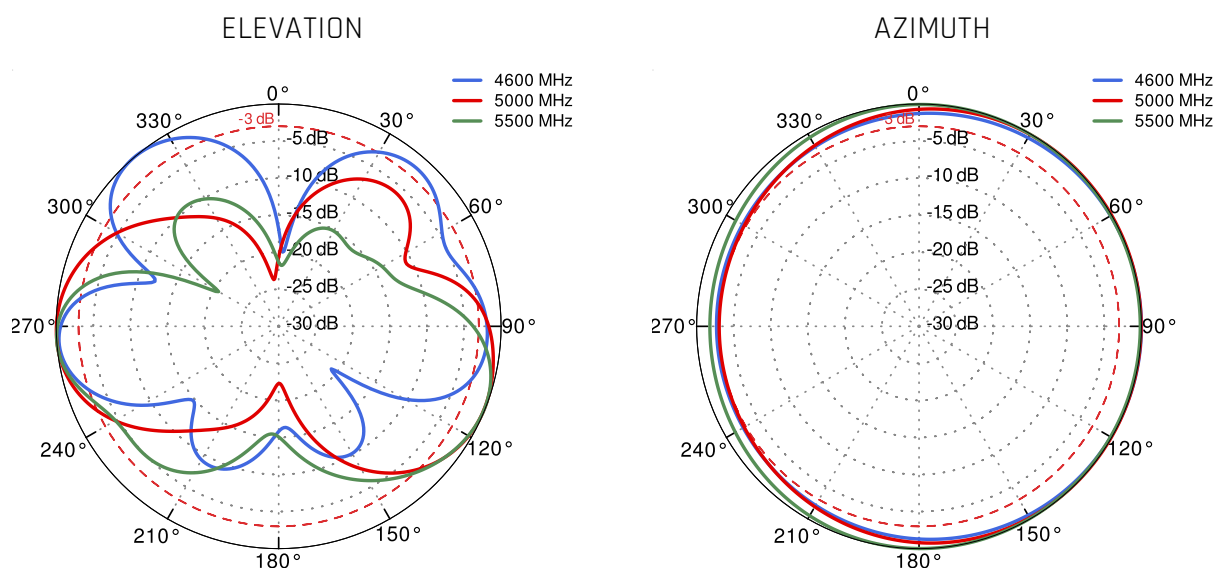
5G/LTE from 1.71GHz to 2.5GHz



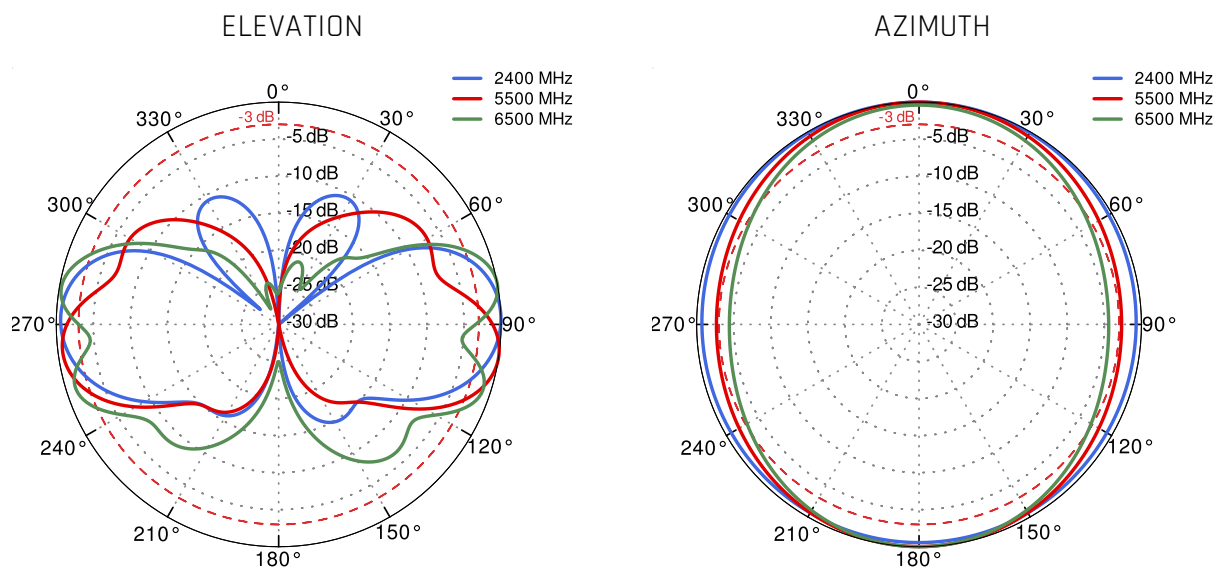
5G/LTE from 3.3GHz to 4.2GHz



5G/LTE from 4.6GHz to 5.5GHz



Wi-Fi 2.4GHz and 5GHz and 6GHz



DIMENSIONS

